



**GHENT
UNIVERSITY**



mimec

MSCA STAFF EXCHANGES- EVOLVE

Adnan Shahid, PhD, SMIEEE

EVOLVE

– Electric Vehicles pOint Location optimization via VEHicular communications (EVOLVE)

Participant Number	Beneficiary	Partner Short Name	Academic	Country
1	University of Malaga	UMA	✓ Yes	Spain
2	Northumbria University	UNN	✓ Yes	UK
3	Ghent University	GU	✓ Yes	Belgium
4	University of Huddersfield	UOH	✓ Yes	UK
5	University of Oulu	UOU	✓ Yes	Finland
6	University of Leeds	UOL	✓ Yes	UK
7	Softcrits	SC	✗ No	Spain
8	Cemosa	CS	✗ No	Spain
9	Smappee	SP	✗ No	Belgium
10	Alstom	AL	✗ No	UK
11	V-tron	VT	✗ No	Netherlands
Number	Partner	Partner Short Name	Academic	Country
12	Yonsei University	YU	✓ Yes	South Korea
13	Princeton University	PR	✓ Yes	USA
14	Virginia Institute Tech	VIT	✓ Yes	USA
15	Tokyo University of Agri. and Technology	TAT	✓ Yes	Japan
16	Thompson Rivers University	TRU	✓ Yes	Canada



EVOLVE VISION

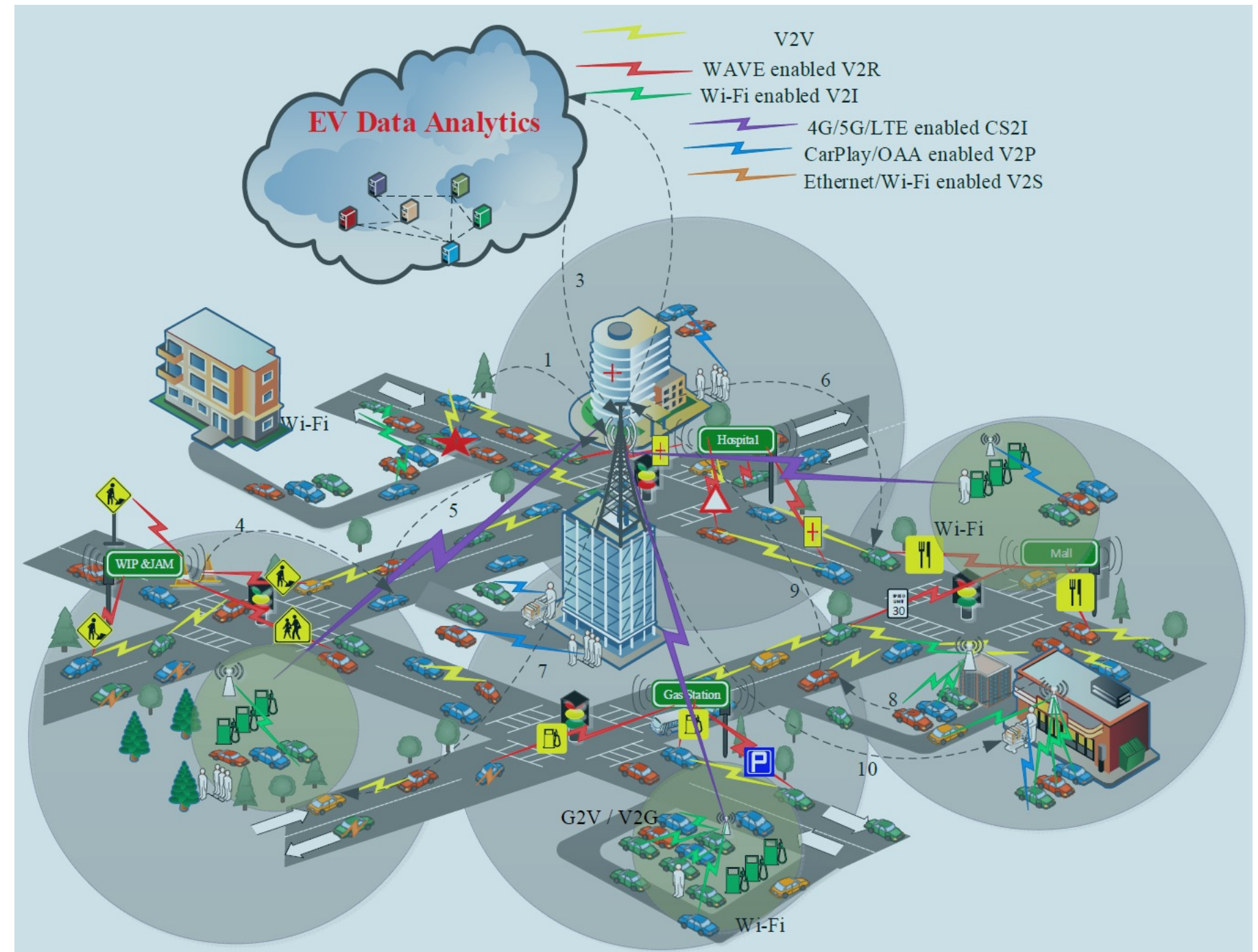
O1: To develop a new framework that enables unified communication and processing capabilities for both EV **charging management systems** and **vehicular communication**.

O2: To develop software services that can be exploited across the application stack. Development of ML/AI capabilities that are employed for **EV charging management application** as well for **self-optimization of resources**.

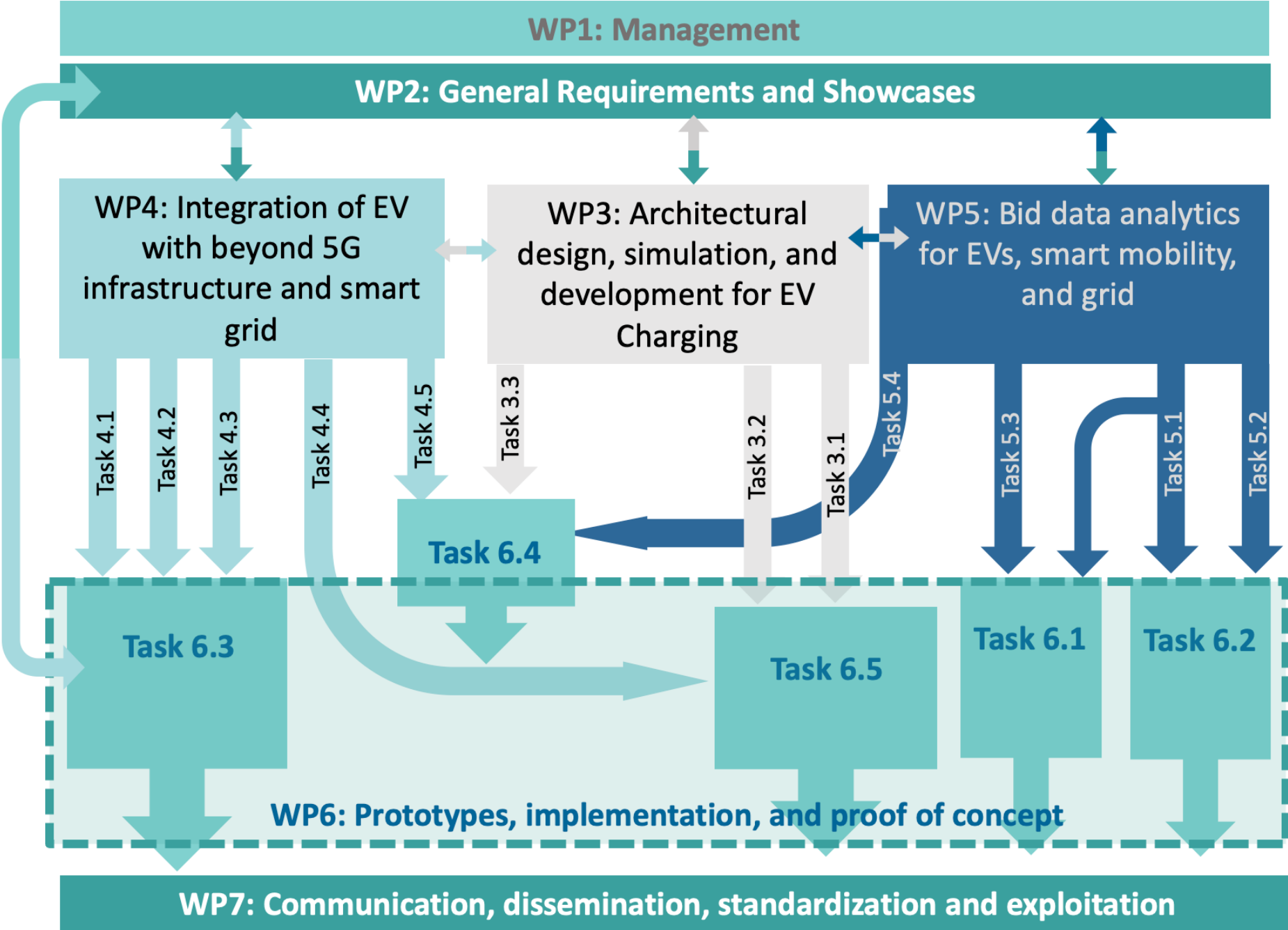
O3: To ensure scalability of proposed framework whereby **application resources and execution across the edge-fog-cloud** is **autonomously and optimally executed**. Provisioning containerized self-scaling software capabilities.

O4: To incorporate dynamics of all three networks, i.e., **power, communications, and vehicular networks** through integrated data layer with appropriate scheduling of flows over wireless networks.

O5: To provide a reliable **V2G and G2V connectivity** which ensures minimal bi-directional impact.



EVOLVE VISION (CONT...)



WHY APPLY MSCA STAFF EXCHANGES?

- To develop good relations with academia and industry outside your country
- To work in a multidisciplinary team
- PhDs/Postdocs/Professors can do secondments in academia and industry which opens other collaboration opportunities
- To open job opportunities for your PhDs and postdocs outside your country.

ADDED VALUE TO RESEARCH AND GHENT UNIVERSITY

- Increase **research output and impact** by working with world-renowned research groups outside Europe like in the US, South Korea, Japan, etc.
- Enhance the **visibility** of Ghent University in your field of expertise at the international level

TIPS AND TRICKS

- Try to contact world-renowned **research groups** and **industries** related to the **proposal theme**
- Contacting research groups is easy because we know which **people work best in our field**
- The research groups can link you to **the industry in that country.**
- Start building the consortium as early as possible (**e.g., 3-4 months in advance**)
- Setup a weekly one hour meeting with **the consortium until the proposal submission deadline.**
- Finalize the **proposal theme** before writing
- Divide **writing tasks among partners based on their expertise.**
- Make sure to wisely choose **the coordinator as he/she would need to steer the write-up process.**

Adnan Shahid

Senior Researcher

IDLAB

E adnan.shahid@ugent.be
T +32 9 331 49 46

www.ugent.be
www.imec.be

 Universiteit Gent
 @ugent
 Ghent University